



Cambodia and MPI

H.E. SAMHENG Boros

Secretary of State, Ministry of Social Affairs, Veteran and Youth Rehabilitation

Head of the Cambodian Delegation to the 8th MPPN Conference

Demographic (2019)

Annual Population

15.55 Million

 **7.98** Million (51.3%) |  **7.57** Million (48.7%)

Growth Rate **1.4%**

Median Age **27**

Life Expectancy
 **76.8** |  **74.3**

Labour Force

8.7 Million

98.6% Employed | **1.4%** Unemployed

Cambodia's Socio-Economic Profiles



Poverty Rate

2007	2019	2020
47.8%	10%	≈14.7%

GDP per capita

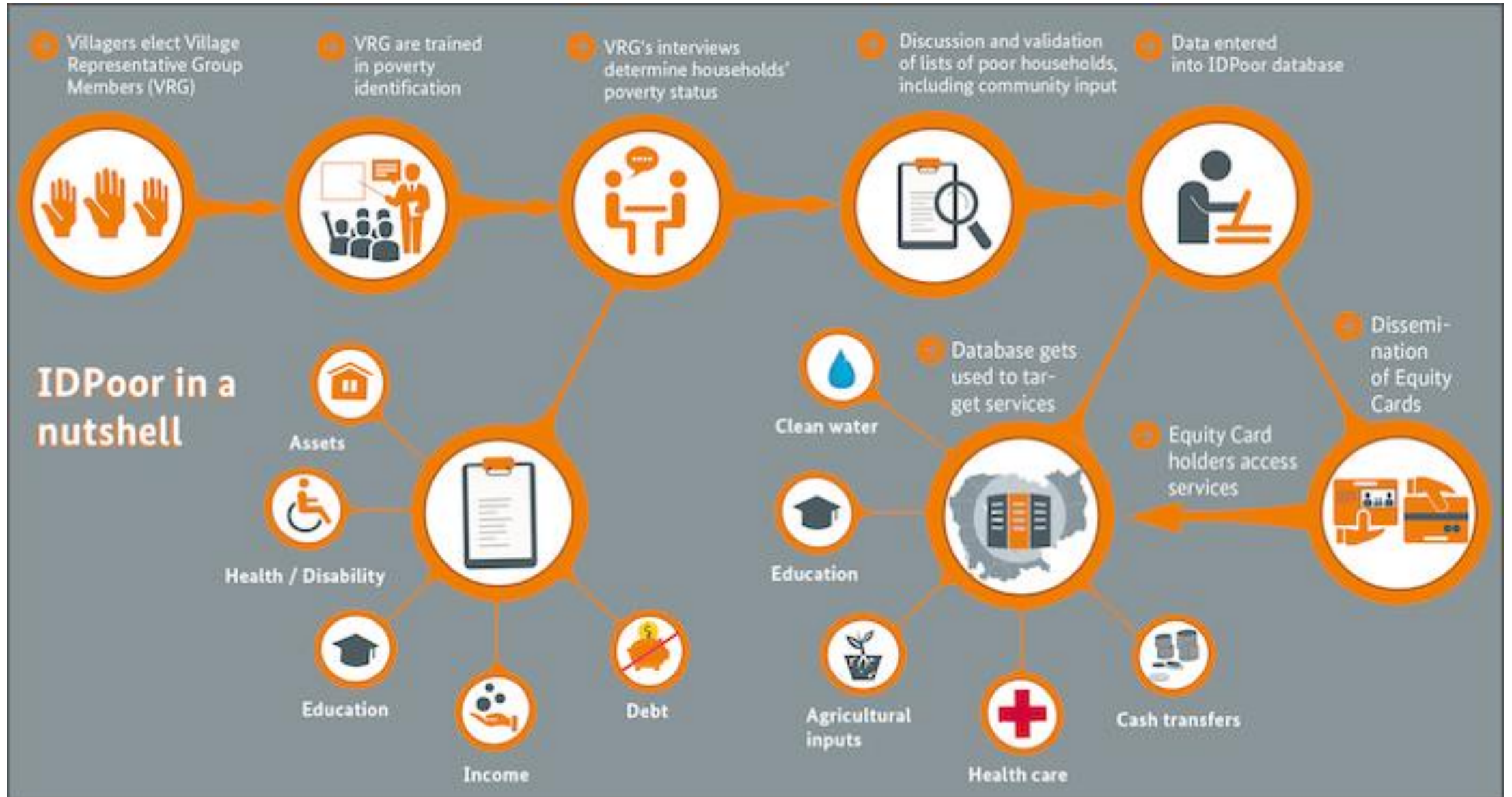
2019	2020	2021
\$1,700	\$1,683 (est.)	\$1,771 (pre.)

1993	2015	2030	2050
Low Income Country	Lower Middle Income Country	Upper Middle Income Country	

World Bank 2018:
Fastest growing country in East Asia with an average growth rate of 8% between 1998 and 2018.

Asian Development Bank 2016:
Cambodia as Asia's New Tiger Economy

IDPoor Identification Procedures



Cash transfer program for the poor as part of COVID-19 responses

First time in history, about 700,000 households (2.7 million people) received cash transfer in Cambodia

- With On Demand-IDPoor, the program was rapidly scaled up to cover those recently falling into poverty due to Covid-19
- Eligibility and payouts by four weighted factors – level of poverty, location, size of household and a vulnerability criteria
- The Government has spent nearly \$400 million since June 2020
- Studies found to be an effective coping mechanism



Multidimensional Poverty Cambodia



CSDG
framework
committed to
measure
multidimension
al poverty



Child
multidimension
al poverty
measured as of
2018 (national
definition)



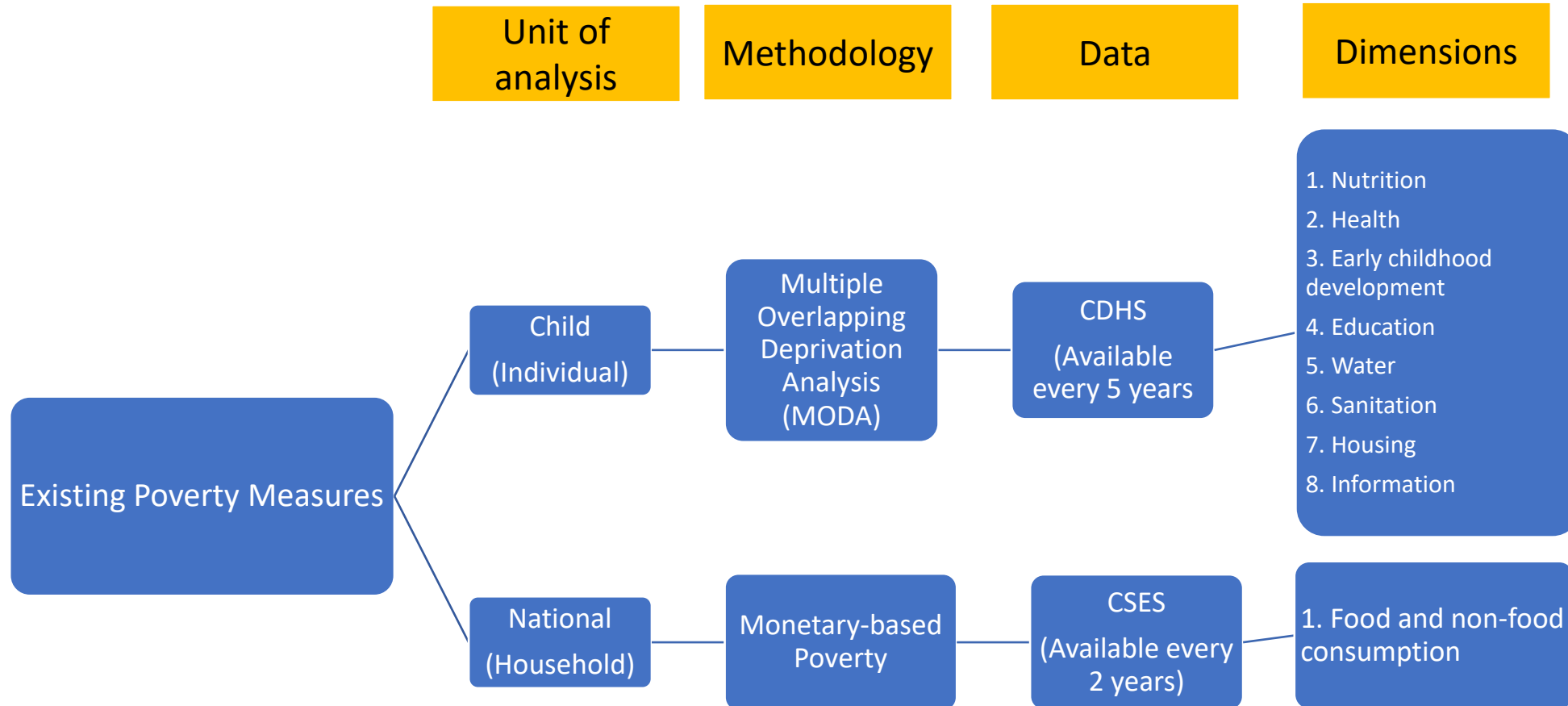
Monetary
poverty
measured
routinely
(national official
measure)



National
multidimension
al poverty in the
pipeline
(national
definition)



Existing Poverty Measures



Cambodia in the Global MPI

Figure 1: Headcount Ratios by Poverty Measures

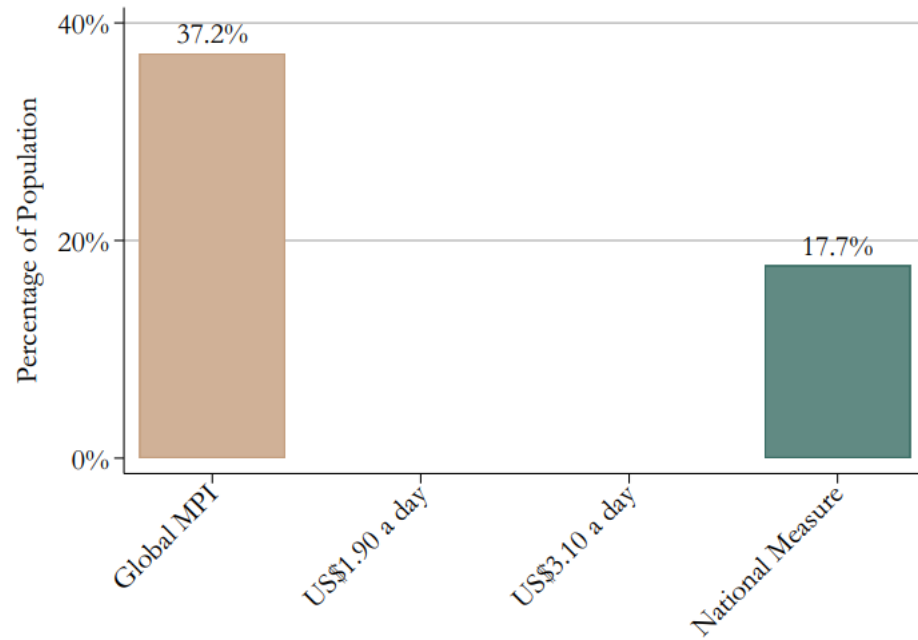
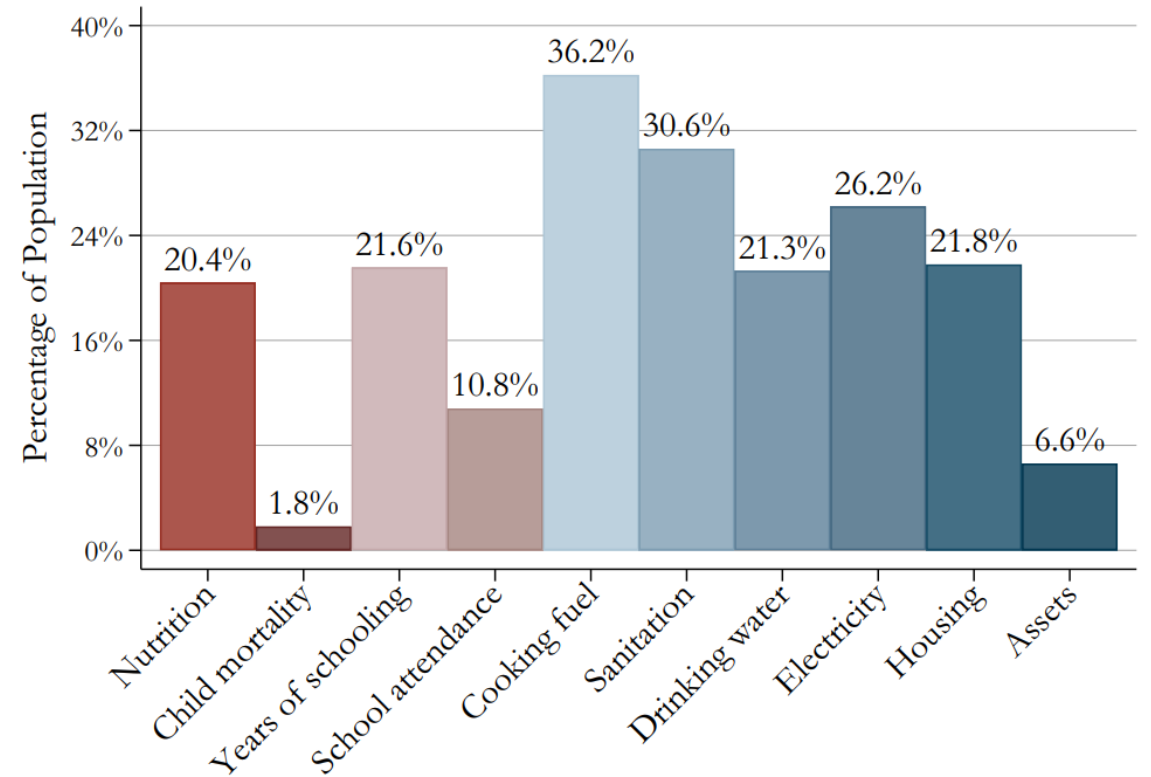


Figure 2: Censored Headcount Ratios



Notes: Source for global MPI: DHS, year 2014, own calculations. Monetary poverty measures are the most recent estimates from World Bank ([Azevedo, 2011](#)). The national poverty measure refers to 2012.

A National MPI Underway...

Government Counterparts

- Ministry of Planning (Lead)
- Ministry of Social Affairs, Veteran and Youth Rehabilitation
- Ministry of Economy and Finance (General Department of Policy)
- National Social Protection Council

Development Partners

- UNDP (Lead)
- UNICEF
- World Bank
- GIZ